

Assisted Living

at Edgewood May Creek



Experience comfort, care, and convenience under one roof - your home!

Edgewood offers customizable services based on each resident's needs. We also provide:

- 24-hour staffing
- Three delicious meals & snacks each day
- Housekeeping, laundry & linen services
- Utilities
- Emergency pendant system
- Activities, outings, & social programs
- Coordination of transportation to appointments

Service Packages

To simplify pricing structures, we offer four service-level packages.

Each resident's care plan is personalized to their needs and based on their overall need for daily assistance and acuity. The service packages vary and will be established by an RN (or designee as determined per state regulations) who completes a total resident evaluation before move-in. Packages may include but are not limited to services such as medication management, hygiene-related care such as dressing, bathing, and grooming, oversight and monitoring of blood pressure, blood sugar, weight, and other daily vitals, and help to and from meals.

Level 1	\$1,300
Level 2	\$1,900
Level 3	\$2,500
Level 4	\$3,100

Apartment Rates

Floorplans may vary.



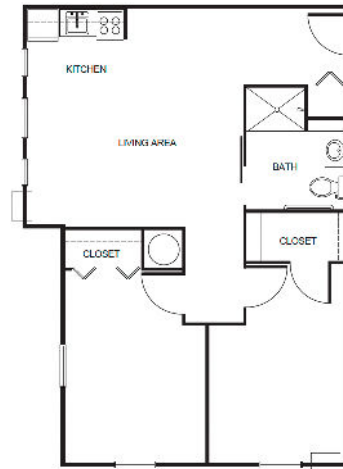
Studio starting at \$3,525



Studio Deluxe starting at \$4,000



One Bedroom starting at \$4,800



Two Bedroom starting at \$5,125

Additional Rates

Community Service Fee (non-refundable)	\$1,000
Assisted Plus starting at	\$500
Comfort Care Plus starting at	\$500
Second Person	\$850

Ask about our short-term stay or adult day services rates and availability!