

Assisted Living

at Edgewood Spearfish



Experience comfort, care, and convenience under one roof - your home!

Edgewood offers customizable services based on each resident's needs. We also provide:

- 24-hour staffing
- Three delicious meals & snacks each day
- Housekeeping, laundry & linen services
- Utilities
- Emergency pendant system
- Activities, outings, & social programs
- Coordination of transportation to appointments

Service Packages

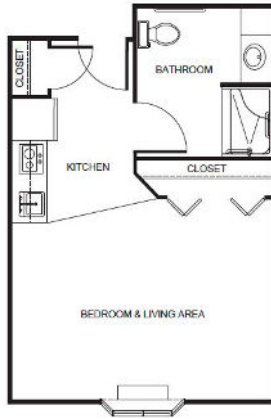
To simplify pricing structures, we offer four service-level packages.

Each resident's care plan is personalized to their needs and based on their overall need for daily assistance and acuity. The service packages vary and will be established by an RN (or designee as determined per state regulations) who completes a total resident evaluation before move-in. Packages may include but are not limited to services such as medication management, hygiene-related care such as dressing, bathing, and grooming, oversight and monitoring of blood pressure, blood sugar, weight, and other daily vitals, and help to and from meals.

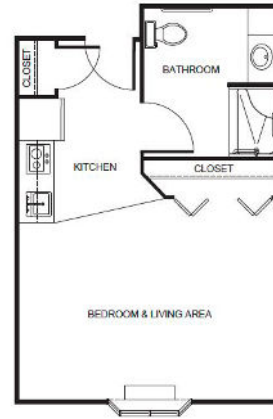
Level 1	\$900
Level 2	\$1,400
Level 3	\$2,000
Level 4	\$2,700

Apartment Rates

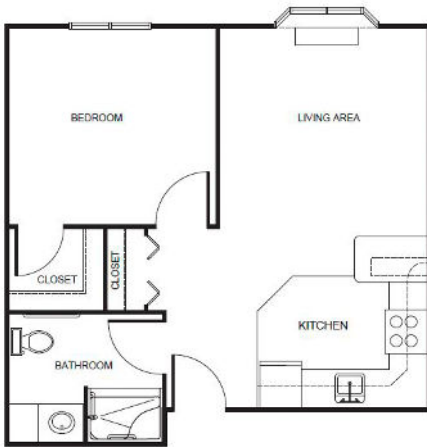
Floorplans may vary.



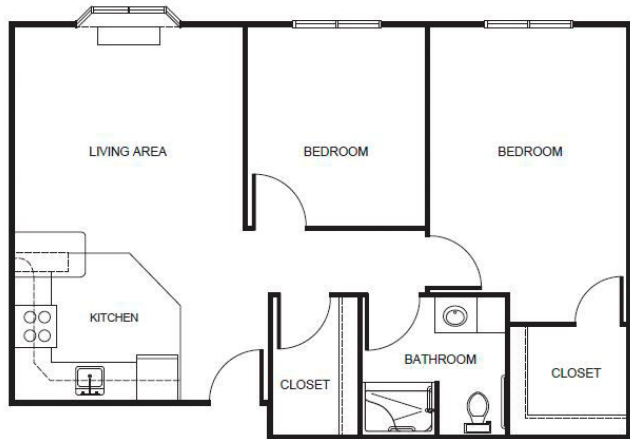
Studio starting at\$3,350



Companion Studio starting at\$2,850



One Bedroom starting at\$4,250



Two Bedroom starting at\$4,950

Additional Rates

Community Service Fee (non-refundable)	\$1,000
Assisted Plus starting at	\$550
Comfort Care Plus starting at	\$550
Second Person	\$800

Ask about our short-term stay or adult day services rates and availability!