

Assisted Living

at Edgewood Mitchell



The comforts of home, balanced with care

Edgewood's Assisted Living is a unique combination of housing, health care and comfortable amenities. Our approach offers a continuum of care with services customized for each individual's needs. Services and amenities include:

- On-site 24-hour staffing
- Scheduled consultation with our nursing services
- 24-hour access to a RN
- Emergency pendant system
- Daily life enrichment activities and regular outings
- Housekeeping, laundry & linen services
- Three delicious meals daily
- Barbershop / beauty salon services available at additional cost

Service Packages

To simplify pricing structures, we offer three service level packages. Services may include, but are not limited to medication management, assistance with dressing, bathing and grooming, assistance monitoring blood pressure, blood sugar, weight, and other daily vitals, and assistance getting to and from meals. Services are grouped based on number and type of services needed and/or acuity. The type of service level package is determined with a RN (or designee as determined per state regulations) who completes a total resident evaluation.

Level 1.....	\$800
Level 2.....	\$1,300
Level 3.....	\$1,900

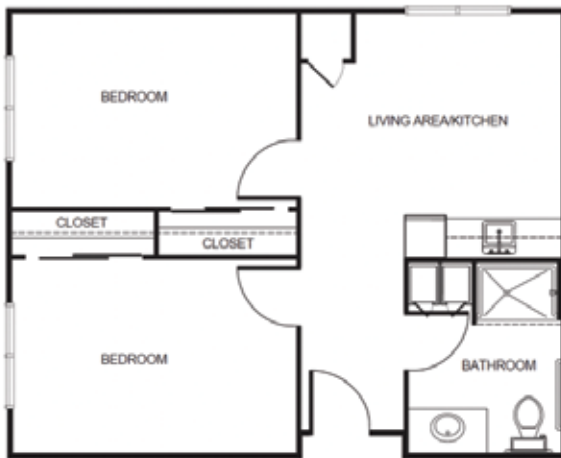
Apartment rates



Studio starting at.....\$3,350



One Bedroom starting at.....\$4,050



Two Bedroom starting at.....\$4,450

** Floorplans may vary*

Additional rates

Community Service Fee (non-refundable)	\$1,000
Assisted Plus	\$550
Comfort Care Plus	\$750
Second Person	\$750
Short Term Stay	\$150 per night