

Assisted Living

at Edgewood Spring Creek
Fruitland



The comforts of home, balanced with care

Edgewood's Assisted Living is a unique combination of housing, health care and comfortable amenities. Our approach offers a continuum of care with services customized for each individual's needs. Services and amenities include:

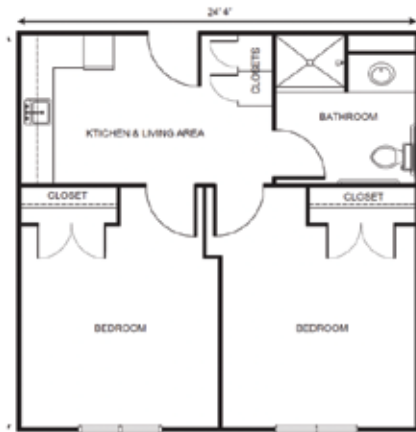
- On-site 24-hour staffing
- Scheduled consultation with our nursing services
- Coordination of transportation to appointments
- Three delicious meals per day plus snacks
- Housekeeping, laundry & linen services
- All basic utilities
- Emergency pendant system
- Daily life enrichment activities and regular outings

Service Packages

To simplify pricing structures, we offer three service level packages. Services may include, but are not limited to medication management, assistance with dressing, bathing and grooming, assistance monitoring blood pressure, blood sugar, weight, and other daily vitals, and assistance getting to and from meals. Services are grouped based on number and type of services needed and/or acuity. The type of service level package is determined with a RN (or designee as determined per state regulations) who completes a total resident evaluation.

Level 1.....	\$850
Level 2.....	\$1,550
Level 3.....	\$2,250

Apartment rates



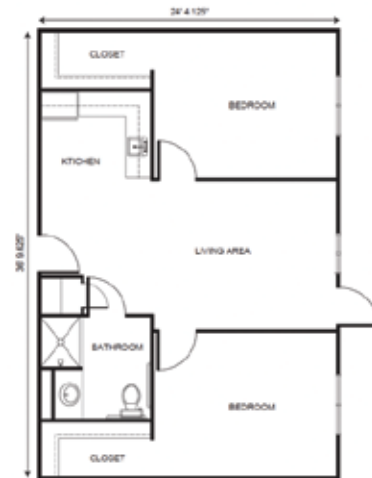
Companion Living *starting at*.....\$3,175



Deluxe Studio *starting at*.....\$4,075



One Bedroom *starting at*.....\$5,275



Two Bedroom *starting at*.....\$5,775

** Floorplans may vary*

Additional rates

Community Service Fee (non-refundable)	\$1,500
Assisted Plus	\$400
Comfort Care Plus	\$400
Second Person Fee	\$1,250
Short Term Stay	<i>starting at</i> \$175/night