

# Assisted Living

at Edgewood  
Spring Creek Eagle



## Experience comfort, care, and convenience under one roof - your home!

Edgewood offers customizable services based on each resident's needs. We also provide:

- 24-hour staffing
- Three delicious meals & snacks each day
- Housekeeping, laundry & linen services
- Utilities
- Emergency pendant system
- Activities, outings, & social programs
- Coordination of transportation to appointments

### Service Packages

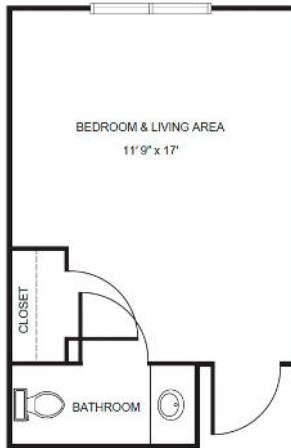
To simplify pricing structures, we offer four service-level packages.

Each resident's care plan is personalized to their needs and based on their overall need for daily assistance and acuity. The service packages vary and will be established by an RN (or designee as determined per state regulations) who completes a total resident evaluation before move-in. Packages may include but are not limited to services such as medication management, hygiene-related care such as dressing, bathing, and grooming, oversight and monitoring of blood pressure, blood sugar, weight, and other daily vitals, and help to and from meals.

Level 1 .....	\$895
Level 2 .....	\$1,595
Level 3 .....	\$2,395
Level 4 .....	\$3,295

# Apartment Rates

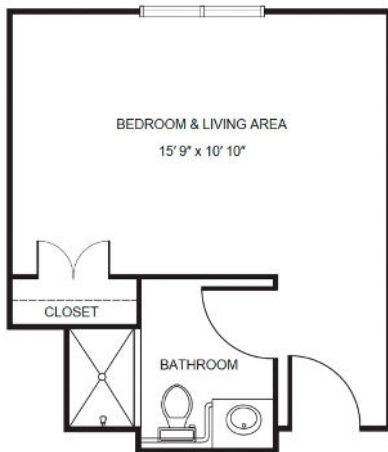
Floorplans may vary.



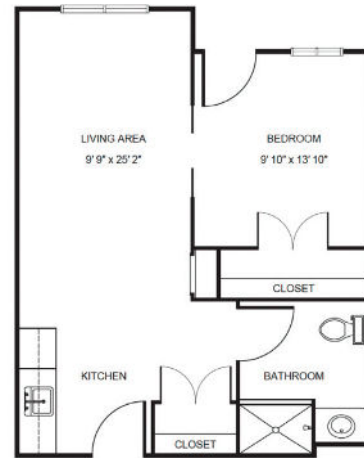
Studio starting at .....\$3,475



Large Studio starting at .....\$3,875



Deluxe Studio starting at .....\$4,075



One Bedroom starting at .....\$4,875

Companion starting at .....\$3,375

# Additional Rates

Community Service Fee (non-refundable) .....	\$1,500
Assisted Plus starting at .....	\$400
Comfort Care Plus starting at .....	\$400
Second Person .....	\$1,325

*Ask about our short-term stay or adult day services rates and availability!*