

Memory Care

at Edgewood May Creek



Memory Care - Designed for Balance

Edgewood's Memory Care residents live as independently as possible within a smaller, more comfortable home-like environment specifically designed to enhance sense of security and belonging. Alzheimer's disease, dementia and memory loss affect each individual differently. Our staff members have ongoing training to understand the conditions and challenges associated with this disease. Our staff-to-resident ratio allows us to provide more personal attention and help residents maintain daily living skills.

As people lose the ability to learn new things, Edgewood's staff members reaffirm what residents do remember, to improve self-esteem and reinforce positive experiences. Residents may assist in activities such as meal preparation, cleanup, folding laundry, gardening and other tasks. Edgewood Memory Care residents receive:

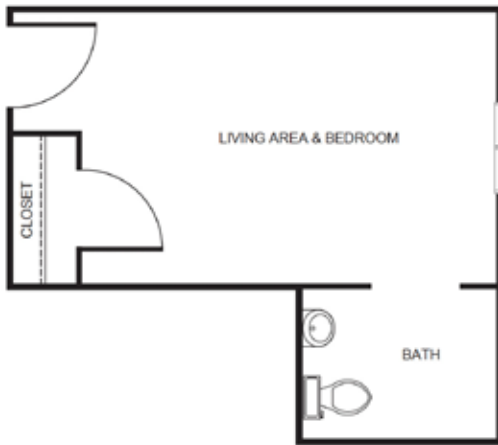
- 24-hour staffing with access to nurses
- Individualized and group activities
- Safe, secure environment with secured doors & fenced outdoor courtyard
- Laundry & housekeeping services
- Care from staff members with specific training in Alzheimer's disease & memory care
- Life Stations designed to spark past memories
- Three nutritious, home-cooked meals & snacks daily
- Barber/beauty salon services available for an additional charge
- Personalized safety checks

Service Level

To simplify pricing structures, we offer three service level packages. Services may include, but are not limited to medication management, assistance with dressing, bathing and grooming, assistance monitoring blood pressure, blood sugar, weight, and other daily vitals, and assistance getting to and from meals. Services are grouped based on number and type of services needed and/or acuity. The type of service level package is determined with a RN (or designee as determined per state regulations) who completes a total resident evaluation.

Service Level One	\$850
Service Level Two	\$1,450
Service Level Three	\$2,050

Apartment rates



Private Room A starting at \$5,450



Private Room B starting at \$5,675



Private Room C starting at \$5,875

** Floorplans may vary*

Additional rates

Community Fee (non-refundable)	\$750
Assisted Plus	\$300
Comfort Care Plus	\$300
Short Term Stay	\$233/night