

# Memory Care

at Edgewood East Grand Forks



## Memory Care - Designed for Balance

Edgewood's Memory Care residents live as independently as possible within a smaller, more comfortable home-like environment specifically designed to enhance sense of security and belonging. Alzheimer's disease, dementia and memory loss affect each individual differently. Our staff members have ongoing training to understand the conditions and challenges associated with this disease. Our staff-to-resident ratio allows us to provide more personal attention and help residents maintain daily living skills.

As people lose the ability to learn new things, Edgewood's staff members reaffirm what residents do remember, to improve self-esteem and reinforce positive experiences. Residents may assist in activities such as meal preparation, cleanup, folding laundry and other tasks. Edgewood Memory Care residents receive:

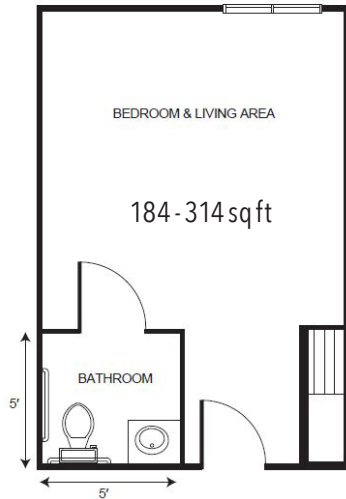
- 24-hour staffing
- Resident safety checks every 30 minutes
- Safe, secure environment with secured doors & outdoor courtyard
- Care from staff members with specific training in Alzheimer's disease & memory care
- Three nutritious, home-cooked meals & snacks daily
- Individualized and small group activities
- Assistance with bathing, grooming & dressing
- Medication administration under nurse supervision
- Laundry & housekeeping services
- Life Stations designed to spark past memories
- All basic utilities included (except telephone)

## Service Level

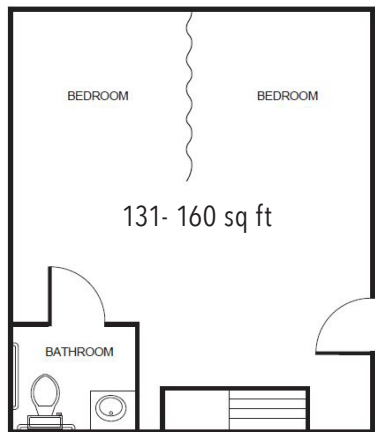
To simplify pricing structures Edgewood offers three levels of care based on each resident's current abilities and stage in their memory loss. This ensures our residents receive the appropriate level of care and support, whether that's through verbal cueing or hands-on care and assistance. The type of service level package is determined with a Registered Nurse (or designee as determined per state regulations) who completes a total resident evaluation.

## Apartment rates

---



|                                         |         |
|-----------------------------------------|---------|
| Private Studio <i>starting at</i> ..... | \$5,200 |
| Service Level 1 .....                   | \$600   |
| Service Level 2 .....                   | \$1,100 |
| Service Level 3 .....                   | \$1,800 |



|                                           |         |
|-------------------------------------------|---------|
| Companion Studio <i>starting at</i> ..... | \$4,500 |
| Service Level 1 .....                     | \$600   |
| Service Level 2 .....                     | \$1,100 |
| Service Level 3 .....                     | \$1,800 |

## Additional rates

---

|                                              |             |
|----------------------------------------------|-------------|
| Community Service Fee (non-refundable) ..... | \$600       |
| Assisted Plus .....                          | \$300       |
| Comfort Care Plus .....                      | \$300       |
| Short Term Stay .....                        | \$225/night |

Effective July 15, 2020 v.1