

Memory Care

at Edgewood Meadow Wind



Memory Care - Designed for Balance

Edgewood's Memory Care residents live as independently as possible within a smaller, more comfortable home-like environment specifically designed to enhance sense of security and belonging. Alzheimer's disease, dementia and memory loss affect each individual differently. Our staff members have ongoing training to understand the conditions and challenges associated with this disease. Our staff-to-resident ratio allows us to provide more personal attention and help residents maintain daily living skills.

As people lose the ability to learn new things, Edgewood's staff members reaffirm what residents do remember, to improve self-esteem and reinforce positive experiences. Residents may assist in activities such as meal preparation, cleanup, folding laundry and other tasks. Edgewood Memory Care residents receive:

- 24-hour staffing with nurse coverage
- Safe, secure environment with secured doors & fenced outdoor courtyard
- Care from staff members with specific training in Alzheimer's disease & memory care
- Three nutritious, home-cooked meals & snacks daily
- Individualized and group activities
- Laundry & housekeeping services
- Barbershop & beauty salon services (additional cost)
- Life Stations designed to spark past memories
- Personalized safety checks

Service Level

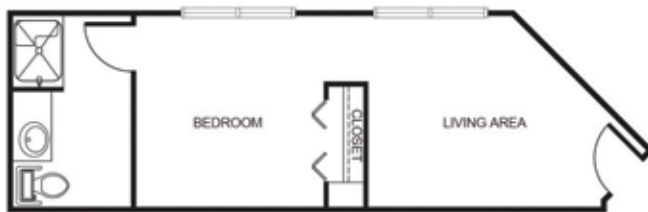
To simplify pricing structures, we offer three service level packages. Services may include, but are not limited to medication management, assistance with dressing, bathing and grooming, assistance monitoring blood pressure, blood sugar, weight, and other daily vitals, and assistance getting to and from meals. Services are grouped based on number and type of services needed and/or acuity. The type of service level package is determined with a RN (or designee as determined per state regulations) who completes a total resident evaluation.

Service Package One	\$600
Service Package Two	\$1,200
Service Package Three	\$1,800

Apartment rates



Studio \$6,500



One Bedroom \$7,150
 Companion Living \$4,875

** Floorplans may vary*

Additional rates

Community Service Fee (non-refundable)	\$1,000
Assisted Plus	\$500
Comfort Care Plus	\$500
Short Term Stay	<i>starting at \$300/night</i>

Effective 2/01/2023 v.1